

Welcome to
ZKC



Kansas City Air Route Traffic Control Center

250 S. Rogers Rd, Olathe, KS 66062

Table of Contents

Page 3

Welcome Letter

Page 4

Facility Accommodations

Page 5

Kansas City Center Leadership

Page 7

Kansas City Center NATCA Leadership

Page 8

Rental Information

Page 10

Kansas City Center Training Department

Page 11

Olathe Kansas Weather

Page 12

Local Area Information

Page 17

Kansas City Center Information

Page 18

Kansas City Center History

Page 19

Kansas City Center First Floor Plan

Page 20

Kansas City Center Second Floor Plan

Welcome Letter

On behalf of NATCA, welcome to Kansas City Center! We are hoping this is the beginning of a long and fun career. You have completed the first of many steps on your path to becoming a Certified Professional Controller. The process of training can be a trying one, but we have all been there and understand the many emotions and thoughts you are likely having. Rest assured, NATCA is here to walk alongside you on this exciting journey!

As you begin to adventure around the building trying to figure out where things are, dive into books to start memorizing maps, LOAs and frequencies, and begin forming life-long connections, remember that NATCA is here to help you be successful. If there is anything that you need or questions that can be answered, please reach out to the NATCA leadership.

PARKING:

A member of the Training Department will take you to Plans and Programs (page 20) to obtain a parking pass. You will need to know the year, make, model, and license plate number of your vehicle. Once you receive your parking pass, it will need to be always displayed once accessing the facility. You will need it and your badge to go through the gate each day.

MOBILE PHONES:

There is a charging station once you enter the control room where most individuals leave/charge their phones. If you choose to take your phone into the operation, it will need to be fully turned off.

FACILITIES:

ZKC has a fully functioning kitchen to include three commercial grade refrigerators, one commercial grade freezer, five microwaves, two sinks, and two commercial grade ovens so you will be able to store or prepare your food. There are also innumerable options from local restaurants right outside of the facility.

Kansas City Center Leadership

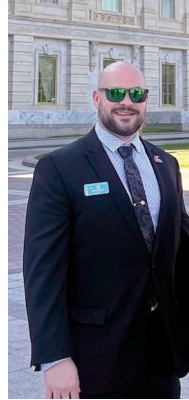
Air Traffic Manager

David Downum

Kansas City Center Leadership

NATCA Facility Representative

Patrick James



I began my career in the United States Air Force in 1999 and was assigned to Columbus AFB, Ms. I started in the tower and the volunteered to transfer into the RAPCON (approach control). I maintained my proficiency in both the tower and RAPCON until my deployment to Iraq in 2004. I spent 5 months at Balad AB, Iraq and when I came home, I separated from active duty and applied to the FAA. I was subsequently hired in November of 2005 and started at the academy. In February of 2006 I was assigned to the Rivers area of specialization and attained my CPC in October of 2007. In 2010 I became the Rivers area NATCA rep. and maintained that role until 2017. In 2023 I assumed the role of Vice President of the local at ZKC and as of January 1st 2025 I am the President of the local. I have had various roles within our union here at ZKC from the local safety council, recurrent training cadre, OJTI cadre, and Drug and alcohol rep just to name a few. As the President of the local I assist the VP and all area reps on all issues that impact our bargaining unit members to include schedules, LOA's, MOU's, disciplinary issues, training issues and LR issues within the central region. I look forward to meeting with you and please travel safe. If you have any questions do not hesitate to reach out to me directly.

Kansas City Center NATCA Leadership

NATCA Facility Representative – Patrick James

NATCA Vice-President – Mike Klein

NATCA Treasurer – Greg Metevelis

NATCA Secretary – Aaron Jewell

Rivers Representative – Jeff Volski

Trails Representative – Jessica Hermsdorfer

Ozark Representative – Abby Goslin

Prairie Representative – Jason Ayala

Flint Hills Representative – Andrew Eakin

Gateway Representative – Justin Vogt

TMU Representative – Stephen Brown

Staff Representative – Clint Long

NATCA At-Large E-Board Members

Javior Salmon (Gateway)

Lindsay Jestila (Prairie)

Evan Kollatz (Rivers)

Inga Owens (Prairie)

Jason White (Ozark)

Rental Information

Residents of Kansas City, Missouri pays a flat 1% earning tax in addition to federal and state tax

There are numerous websites you can use to search for an apartment which are user friendly. Simply enter certain parameters, such as number of bedrooms requested and other amenities, and the site will produce a list of available apartment homes. Here are just a few shortcuts to get you started.

[Apartment List](#)

[Apartments](#)

[Satori Apartments](#)

[Apartment Guide](#)

We have compiled a short list of apartments that can also serve as a starting point. In some instances, we have included testimonials from former trainees on their experiences with the specific complexes. If you find errors with any information in this list, please inform the NATCA Secretary/FACREP so the list can be kept up to date as information changes.

StonePost Ranch Apartments	12801 W. 136 th Street, Overland Park, KS 66221	913-402-0011	https://www.stonepostranchapts.com/
StonePost Lakeside Apartments	13810 Pflumm Olathe, KS 66062	913-780-5400	https://www.stonepostlakesideapartments.com/
The Homestead Apartment Homes	11800 S Shannon St Olathe, KS 66062	913-937-8374	Thehomesteadapartments.com
3 to 6 Month lease available but cost an extra \$150 per month. Monthly available after 6 months but cost \$125 extra. MUST HAVE 2 MONTHS NOTICE. Garages for \$90 if available. 2 Bedroom base price \$1280			

Comments -- Homestead is a great place for a new hire etc. Was more than reasonably priced, conveniently located and the management team was great. I rented my apartment unseen from OKC and was weary I was going to get a dump. It was a refurbished unit with brand new carpet etc. the complex also has great amenities incl a full court basketball court, and multiple pools. I haven't lived there in 1 1/2 yrs after buying my house so it could've have changed but would definitely recommend from my past experience.

Ramsgate Apartments	12930 S Brookfield St. Olathe, KS 66062	913-782-0200	www.ramsgaterentals.com
---------------------	--	--------------	--

Shortest lease 1 year.

Summerset Oaks Apartment Homes	814 N Mur-Len Rd Olathe, KS 66062	913-780-3636	Somersettoaksapts.com
-----------------------------------	--------------------------------------	--------------	--

1 bedroom starts at \$1,100, 2 bedroom \$1,300, and a 2 bedroom with study start at \$1,550. They are pet friendly, have detached and attached garages as well as carports, and have a pool and gym.

Horizon Trails Apartments	30125 W. 187 th St. Suite 113 Gardner, KS 66030	913-605-1060	Horizontrails.com
------------------------------	--	--------------	--

Creekside Apartment Homes	11920 Oakmont St. Overland Park, KS 66213	913-402-8400	Creeksideaptskc.com
------------------------------	---	--------------	--

Detached garages available. Pet friendly. Have a pool and gym. Full size washer and dryer. Located on a major biking and hiking trail

Chestnut Heights Townhome	12500 S. Constance St. Olathe, KS 66062	913-829-1141	
------------------------------	---	--------------	--

1 year leases only. Offer 2 and 3 bedrooms. Have a dog park. All units are being refurbished. All tenants have single car enclosed private garage. **They mentioned a discount on application fees.**

StonePost Crossing	12800 W. 134 th St. Overland Park, KS 66213	913-681-7617	https://stonecrossing.com
--------------------	---	--------------	---

6 month is shortest lease and cost \$75 extra. They have 39 attached garages, saltwater pool, gym, car care center, and dog park. 1 Bedroom starts at \$1,350, 2 bedroom \$1,762, 3 bedroom \$2,175.

Kansas City Center Training Department

Training Department Manager

Dan Fyle

913-254-8470

Daniel.b.fyle@faa.gov

Training Department NATCA

Clint Long

Clinton.l.long@faa.gov

Clintlong25@gmail.com

913-254 8474 (work)

816-352-3121 (cell)

Latifa Totty

Latifa.n.totty@faa.gov

913-254-8470 (work)

313-477-4461 (cell)

Kurt Nauman

kurt.b.nauman@faa.gov

controllerkurt@gmail.com

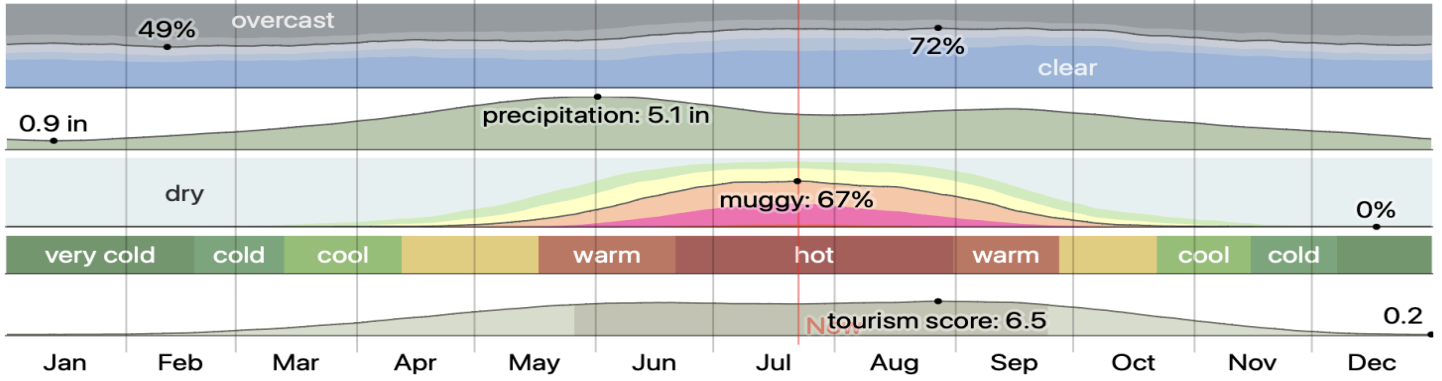
913- 728-3356

Olathe Kansas Weather

Olathe has summers that are hot, muggy, and wet, winters that are very cold, snowy, and windy, and is partly cloudy year-round.

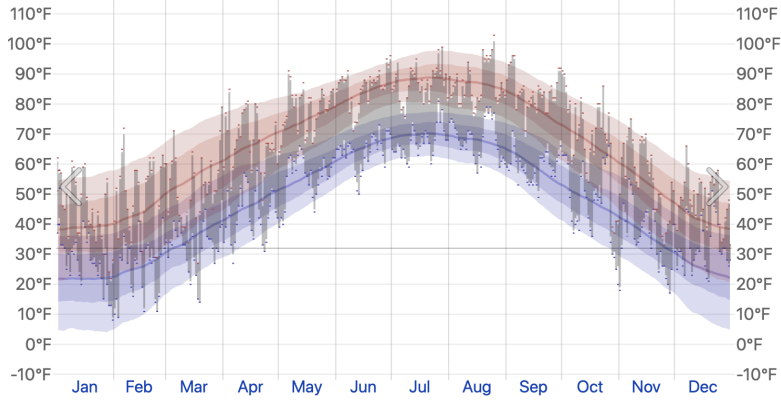
Climate in Olathe

[Link](#)
[Download](#)
[Compare](#)
 History: [2023](#) [2022](#) [2021](#) [2020](#) [2019](#) [2018](#) [2017](#) [2016](#) [2015](#)



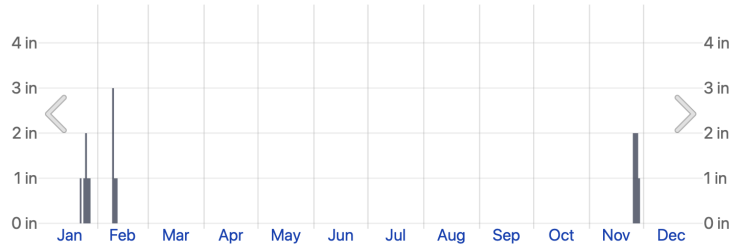
Olathe Temperature History 2023

[Link](#)
[Download](#)
[Compare](#)
[Averages](#)
 History: [2024](#) [2023](#) [2022](#) [2021](#) [2020](#) [2019](#) [2018](#) [2017](#) [2016](#)



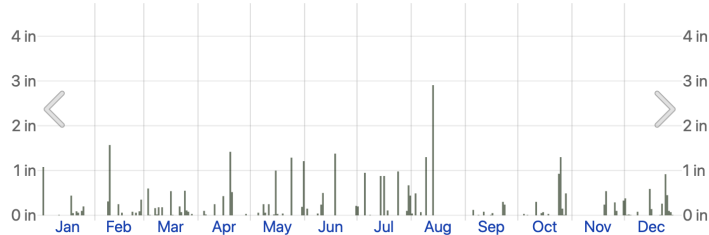
Snow Depth in 2023 in Olathe

[Link](#)
[Download](#)
[Compare](#)
[Averages](#)
 History: [2024](#) [2023](#) [2022](#) [2021](#) [2020](#) [2019](#) [2018](#) [2017](#) [2016](#)



Daily Precipitation in 2023 in Olathe

[Link](#)
[Download](#)
[Compare](#)
[Averages](#)
 History: [2024](#) [2023](#) [2022](#) [2021](#) [2020](#) [2019](#) [2018](#) [2017](#) [2016](#)



Local Area Information

Whether you're looking for good food, good sports, or a good museum, Kansas and Missouri offer many choices!

[Olathe Chamber of Commerce](#) - Things to do in Olathe

[Things To Do in Kansas City](#) – Things to do in Kansas City

BBQ:

[KC Joes](#) – 11950 S. Strang Line Rd, Olathe, KS 66062

[Jack Stack](#)– 9520 Metcalf Ave., Overland Park, KS 66212

Mexican:

[Ponak's Mexican Kitchen & Bar](#) – 2856 Southwest Blvd, Kansas City, MO 64108

[Margarita's Amigos](#)– 7890 Quivira Rd, Lenexa, KS 66216

[El Patron](#) – 397 S Parker St, Olathe, KS 66061

[Kansas City Taco Trail](#)– 755 Minnesota Ave., Kansas City, KS 66101

American:

[The Peanut](#) – 1731 S Mur-Len Rd, Olathe, KS 66062

Breweries:

[Red Crow Brewery](#) – 1062 West Santa Fe St., Olathe, KS 66061

[Transport Brewery](#) – 11113 Johnson Dr., Shawnee, KS 66203

[Servaes Brewing Company](#) – 10921 Johnson Dr., Shawnee, KS 66203

[Friction Beer Company](#) - 11018 Johnson Dr., Shawnee, KS 66203

Recreation:

[Shawnee Mission Park](#) – 7900 Renner Rd., Shawnee, KS 66219

[WWI Museum](#) – 2 Memorial Dr., Kansas City, MO 64108

[Union Station](#) – 30 West Pershing Rd., Kansas City, MO 64108

[The Rosedale Memorial](#) – 3602 Springfield St., Kansas City, KS 66103

[Kansas City Auto Museum](#) – 15095 West 116th, Olathe, KS 66062

[St. Louis Arch](#) – Gateway Arch, St. Louis, MO 63102

[Kansas City Zoo](#) – 6800 Zoo Dr., Kansas City, MO 64132

[Kansas City Royals MLB](#) – 1 Royal Way, Kansas City, MO 64129

[Sporting KC MLS](#) – 1 Sporting Way, Kansas City, KS 66111

[Kansas City Chiefs NFL](#) – 1 Arrowhead Dr., Kansas City, MO 64129

Public Schools:

KANSAS

For a complete list of State accredited schools, refer to the [Kansas State Department of Education](#) website.

Kansas public schools report an average math proficiency score of 28%, reading proficiency average of 36%, and an average of 92% of students attending public school.

JOHNSON COUNTY

There are 164 public schools, having one of the highest concentrations of top ranked public schools in Kansas, serving 95,543 students in Johnson County, Kansas. 88% of all K-12 students in Johnson County are educated in public schools average a math proficiency score of 40%, average reading proficiency score of 48%, and an average ranking of 10/10 placing them in the top 5% of Kansas public schools.

There are 54 private schools serving 13,232 students.

WYANDOTTE COUNTY

There are 60 public schools serving 30,167 students in Wyandotte County, Kansas. 95% of all K-12 students are educated in public school with an average math proficient score of 12%, average reading proficiency score of 20%, and an average ranking of 1/10 placing them in the bottom 50% of Kansas public schools.

There are 9 private schools, serving 1,570 private students.

LEAVENWORTH COUNTY

There are 27 public schools, having one of the highest concentrations of top ranked public schools in Kansas, serving 13,466 students in Leavenworth County, KS. 97% of all K-12 students are educated in the public school with an average math proficiency score of 31%, average reading proficiency score of 41%, and an average ranking of 8/10 landing in the top 30% of Kansas public schools.

There are 5 private schools serving 401 private students.

FRANKLIN COUNTY

There are 13 public schools serving 3,827 students in Franklin County, KS. 97% of all K-12 students are educated in public school with an average math proficiency score of 26%, average reading proficiency score of 33%, and an average ranking of 5/10 placing them in the bottom 50% of Kansas public schools.

There are 2 private schools, serving 119 private students.

MISSOURI

For a complete list of State accredited schools, refer to the [Missouri Department of Primary and Secondary Education](#) website.

Missouri public schools report an average math proficiency score of 35%, reading proficiency average of 45%, and an average of 88% of students attending public school.

PLATTE COUNTY

There are 34 public schools, one of the highest-ranking concentrations of top ranked public schools in Missouri, serving 17,204 students in Platte County, MO. 94% of all K-12 students are educated in public school with an average math proficiency score of 47%, average reading proficiency score of 56%, and average ranking of 10/10 placing them in the top 5% of Missouri public schools.

There are 10 private schools serving 1,191 private students.

CLAY COUNTY

There are 80 public schools serving 41,308 students in Clay County, MO. 92% of all K-12 students are educated in public school with an average math proficiency score of 41%, average reading proficiency score of 52%, and an average ranking of 9/10 placing them in the top 20% of Missouri public schools.

There are 20 private schools serving 3,378 private students.

JACKSON COUNTY

There are 234 public schools serving 105,516 students in Jackson County, O. 88% of all K-12 students are educated in public school with an average math proficiency score of 29%, average reading proficiency score of 40%, and an average ranking of 1/10 placing them in the bottom 50% of Missouri public schools.

There are 77 private schools serving 13,766 private students.

CASS COUNTY

There are 38 public schools serving 16,512 students in Cass County, MO. 98% of all K-12 students are educated in public school with an average math proficiency score of 34%, average reading proficiency score of 47%, and an average ranking of 6/10 placing them in the top 50% of Missouri public schools.

There are 4 private schools serving 347 private students.

Religious Affiliated Private Schools:

KANSAS

There are 183 religiously affiliated private schools serving 38,475 students in Kansas. The average tuition cost is \$7,281, which is lower than the Kansas private school average tuition cost of \$7,856. The most common religiously affiliated schools are Catholic (58% of schools), Christian (20% of schools), and Lutheran Church Missouri Synod (9% of schools).

MISSOURI

There are 501 religiously affiliated private schools serving 91,106 students in Missouri. The average tuition cost of \$7,940, which is lower than the Missouri private school average tuition cost of \$10,442. The most common religiously affiliated schools are Catholic (44% of schools), Christian (19% of schools), and Lutheran Church Missouri Synod (13% of schools).

Private Schools:

The national average of students that attend private schools are 10%.

KANSAS

There are 228 private schools serving 42,446 students in Kansas. 8% of all K-12 students in Kansas are educated in private schools. The average private school tuition is \$6,978 for elementary schools and \$10,462 for high schools (view [national tuition averages](#)). The average acceptance rate is 93% (view [national acceptance rates](#)). Minority enrollment is 25% and the student: teacher ratio is 13:1. 80% of schools are religiously affiliated (most commonly [Catholic](#) and [Christian](#)).

There are [1,312 public schools](#) serving 476,419 students.

MISSOURI

There are 674 private schools serving 116,705 students in Missouri. 12% of all K-12 students in Missouri are educated in private schools. The average private school tuition is \$9,987 for elementary schools and \$12,434 for high schools (view [national tuition averages](#)). The average acceptance rate is 89% (view [national acceptance rates](#)). Minority enrollment is 19% and the student: teacher ratio is 13:1. 74 % of schools are religiously affiliated (most commonly [Catholic](#) and [Christian](#)).

There are [2,461 public schools](#) serving 878,097 students.

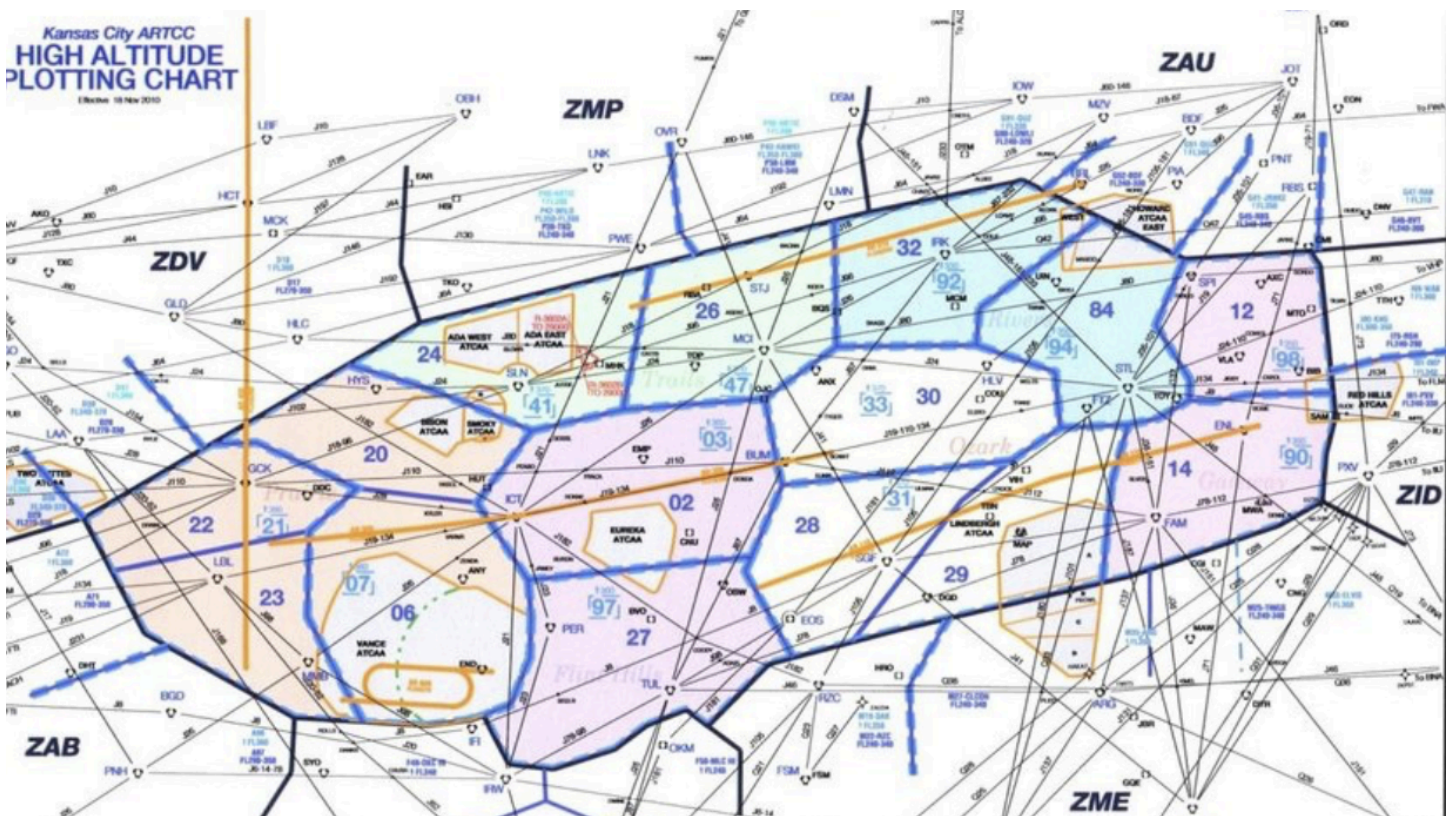
References:

[Private School Review](#)

[Public School Review](#)

[Religiously Affiliated Private Schools](#)

Kansas City Center Information



Kansas City Center's airspace encompasses portions of Arkansas, Arizona, Colorado, Illinois, Iowa, Kansas, Missouri, Nebraska, New Mexico, Oklahoma, and Texas covering a total of about approximately 195,000 square miles working in tandem with 7 other ARTCCs and 16 Approach

Controls. Comprised of 15 high sectors, 15 low sectors, and 12 ultra high sectors divided into 6 areas of specialization, Kansas City Center controls approximately just under 2 million aircraft annually with almost 100,000 military operations alone.

Kansas City Center History

The original Kansas City Center was commissioned during World War II on 1 Feb 1942 and was located at the Kansas City Municipal Airport with 15 employees. Late in 1942, the Center was relocated to the 16th floor of the city hall in Kansas City, Missouri. On 30 Apr 1962, the Center moved to its current location at 250 S. Rogers Rd. Olathe, Kansas. The Kansas City Center covers a part of the FAA's Central service area.

Initially, the 20 ARTCCs in the lower 48 States were equipped with IBM 9020 computers to automate some of the ARTCC functions. In 1988 the IBM 3083 computer system known as "Host" replaced the old IBM 9020s in these ARTCCs. On 14 Jun 2012, the FAA decommissioned the 4-decades-old En Route Host computer system at the Seattle and Salt Lake City ARTCCs and replaced the system with the new En Route Automation Modernization (ERAM) system. As of 27 Mar 2015, all 20 of the lower 48 United States ARTCCs had converted to the ERAM system as had the FAA Academy in Oklahoma City, Oklahoma.

ERAM technology is the heart of the Next Generation Air Transportation System (NextGen) and the pulse of the National Airspace System (NAS), helping to advance the transition from a ground-based system of air traffic control to a satellite-based system of traffic management. ERAM can process data from 64 radars versus the 24-radar processing with the legacy HOST system.

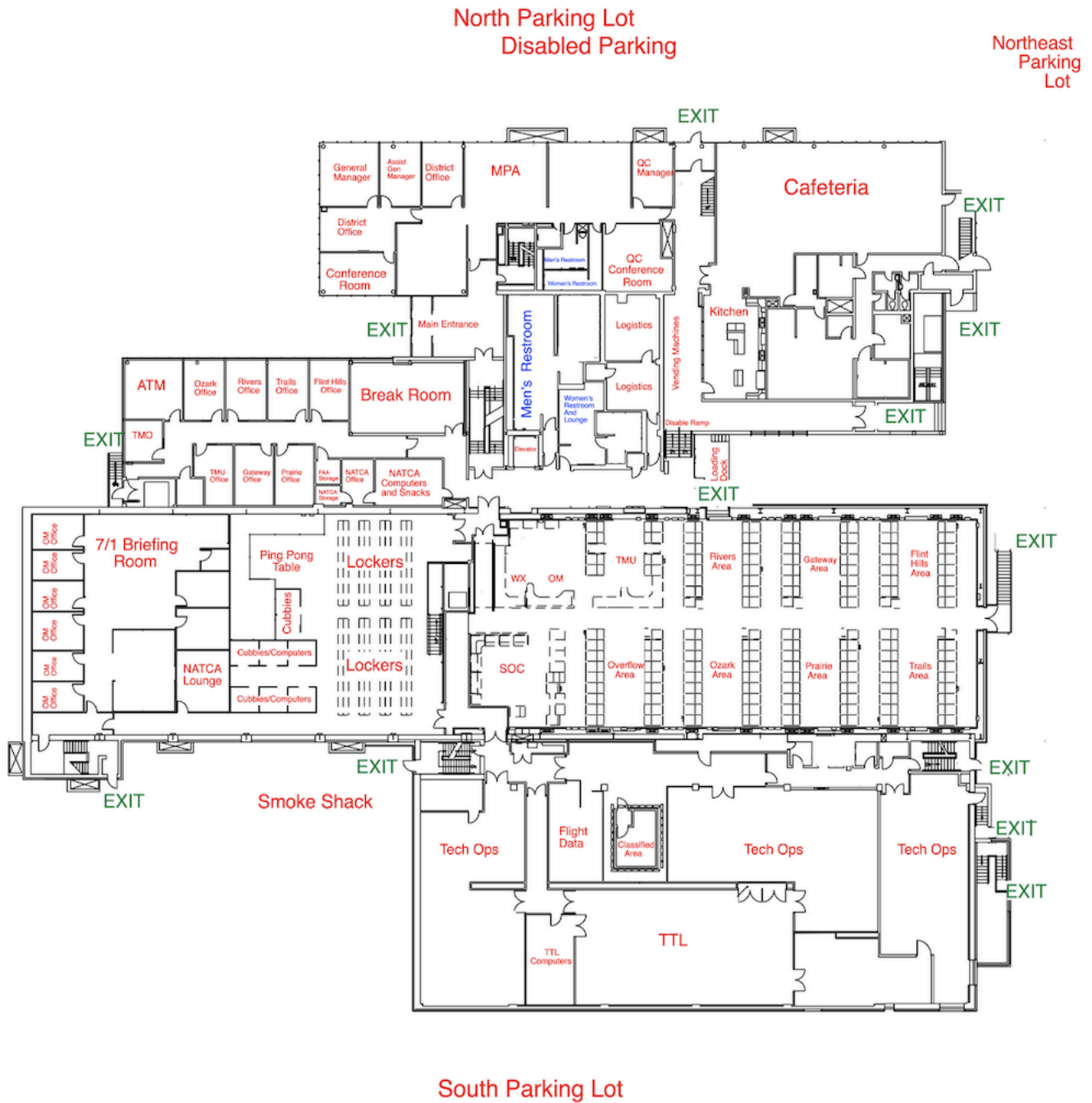
Kansas City Center served as one of two test sites for Controller-Pilot Data Link Communication (CPDLC) and has been utilizing the program since 2019. CPDLC allows Air Traffic Controllers to send data link clearances and instructions to pilots in domestic airspace, including climbs, descents, reroutes, and handoffs between ATC sectors in the En Route Center (ARTCC) environment. In addition to flight efficiency benefits from streamlined communications, CPDLC is expected to enhance safety as reroutes are provided in a form that allows for loading directly into the FMS, reducing the risk of typing errors or fix name confusion.

References:

[ZKC History](#)

[ALPA CPDLC Guidance](#)

Kansas City Center First Floor Plan



Kansas City Center Second Floor Plan

